

## *Grade 1 Theory Notes*

# Rock School Guitar

## *Grade 1 Musicianship Questions*

### The Theory

#### *- Recognition of Pitches -*



A musical staff in 4/4 time with a treble clef. The notes are: E4 (quarter), G4 (quarter), B4 (quarter), D5 (quarter), E5 (quarter), D5 (quarter), C5 (quarter), B4 (quarter), A4 (quarter), G4 (quarter), F4 (quarter), E4 (quarter). The lyrics are: Every, Good, Boy, Deserves, Food, Middle C, D, FACE. There are fingerings: 1 above the first E, 2 above the first D, and 3 above the first F.

#### *- Note Values -*

1/1 Whole Note            Semi - Breve (4 beats)

1/2 Half Note                  Minim (2 beats)

1/4 Quarter Note                              Crotchet (1 beat)

1/8 Eighth Note                                                      Quaver (1/2 beat)

(Quavers can be grouped as  or )

## *Dotted Notes:*

*Hold the note you are playing for half its length again.*

*e.g.*

$\text{♩} = 1 \text{ beat}$   $\text{♩.} = 1.5 \text{ beats}$  |  $\text{♪} = 2 \text{ beats}$   $\text{♪.} = 3 \text{ beats}$

## *Tied Notes:*

*Mostly used to sustain a note across a bar line. The second note in the tie remains silent – you hold the note for the length of both notes, playing only the first.*

*e.g.*

$\text{♩} \text{ — } \text{♩} = 1.5 \text{ beats}$      $\text{♪} \text{ — } \text{♪} = 3 \text{ beats}$      $\text{♩} \text{ — } \text{♩} = 8 \text{ beats}$

## *- Rest Values -*

$1|1$  *Whole Note*



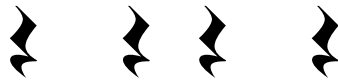
*Semi – Breve (4 beats)*

$1/2$  *Half Note*



*Minim (2 beats)*

$1/4$  *Quarter Note*



*Crotchet (1 beat)*

$1/8$  *Eighth Note*



*Quaver (1/2 beat)*

## *-Time Signatures-*

*Time signatures are found at the beginning of each piece and tells you how many beats are each bar and what beat that is. The most common time signature is 4*

*4.*

*This means there is the equivalent of 4 crotchet beats in each bar. So however many notes/rests there are they must add up to 4 beats.*

*e.g.*



*4 – the top number shows how many beats per bar*

*4 – the bottom number shows what sort of beats they are  
(in this case crotchet beats or 1/4 notes)*

*other examples are 2 – 2 crotchet beats per bar*

*4*

*6 – 6 quaver (1/8note) beats per bar*

*8*

*2 – 2 minim (1/2note) beats per bar*

*2*

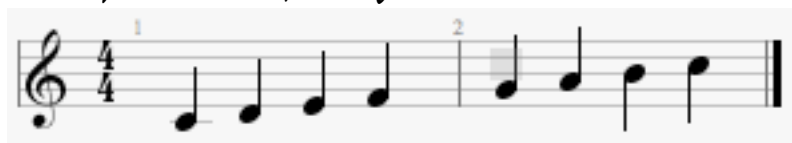
*N.B. to work out what beats the bottom number refers to look back at the note values:*

*1/2 note = minim 1/4 note = crotchet 1/8 note = quaver*

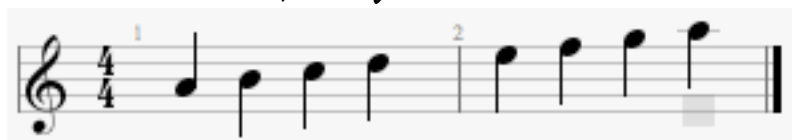
## *-Key Signatures-*

*The key signature is shown at the start of each line and tells you what key the piece is in by showing what sharps or flats are in the piece. These examples show the key signatures and the scales that go with them.*

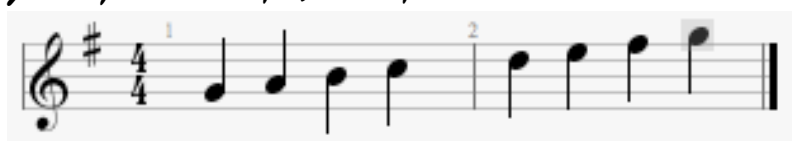
*C Major (no sharps or flats)*



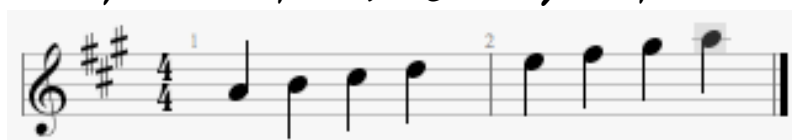
*A Minor (no sharps or flats)*



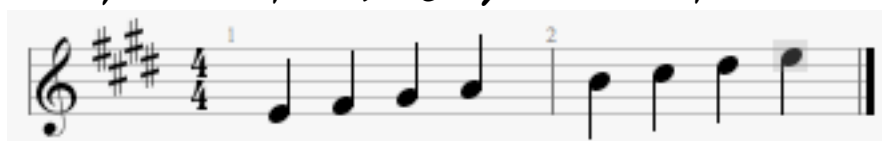
*G Major (1 sharp F sharp)*



*A Major (3 sharps - F, C and G sharp)*



*E Major (4 sharps - F, C, G and D sharp)*



*# = sharp - a sharp raises a note by 1 semitone/half step*

*b = flat - a flat lowers a note by 1 semitone/half step*

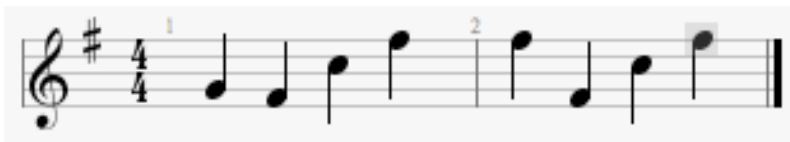
*Key signatures save you having to write a sharp or flat next to every note in the given key that requires one.*

*For Example:*

- In the key of A Major: Every time you see an F, C or G you know that it has to be raised by 1 semitone/half step to make them F#, C#, and G#.*



- In the key of G Major: every time you see an F you know to sharpen it by 1 semitone/half step to make it an F#.*



### *-Major Triad-*

*The major triad is made up of the:*

*1<sup>st</sup> note (root) of the major scale*

*3<sup>rd</sup> note (major 3<sup>rd</sup>) of the major scale*

*5<sup>th</sup> note (perfect 5<sup>th</sup>) of the major scale*

*e.g. In C Major the triad is C E G*



*C D E F G A B C*  
*(root) (major 3<sup>rd</sup>) (perfect 5<sup>th</sup>)*

## *-Minor Triad-*

*For the minor triad you flatten the 3<sup>rd</sup> note of the major scale which gives you the:*

*1<sup>st</sup> note (root) of the minor scale*

*3<sup>rd</sup> note (minor 3<sup>rd</sup>) of the minor scale*

*5<sup>th</sup> note (perfect 5<sup>th</sup>) of the minor scale*

*e.g. In C Minor the triad is C Eb G*



*C D Eb F G Ab Bb C*  
*(root) (minor 3<sup>rd</sup>) (perfect 5<sup>th</sup>)*